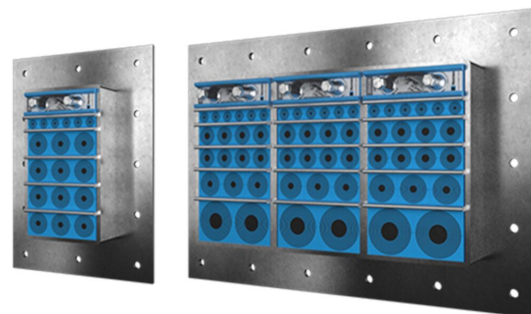




Roxtec GHM transit

Transit for high cable density and large cables.

The Roxtec GHM is a light-weight cable entry seal which is attached by bolting and includes a sealing strip to seal against the structure. The transit frame is available in different materials and in a single or various combinations of openings. The sealing modules are adaptable to cables and pipes of different sizes and can be used to build in spare capacity in the transit.



- Rodent resistant
- Area efficient

Product characteristics



Fire rated



Watertight



IP/UL NEMA

Structure of installation



Sandwich panel



Cabinets & enclosures



Metal

Mounting type



Bolting

Ratings & certificates

Fire

- A-CLASS according to IMO 2010 FTP Code
- E/EI rating according to EN 13501

Tightness

- Water: 3 bar (catastrophic)
- IP 66/67

Frame dimensions

mm/kg

The frame variants below are a limited selection. For the full range of frames and configurations, please visit [roxtec.com](https://www.roxtec.com).

	Product	Frame openings	Packing space	External dimensions W x H x D	Aperture dimensions w x h	Weight	Art. no
	GHM 6x1 GALV INCL TSL 15x6	1	120 x 180	252.5 x 350 x 60	147.5(+5/-5) x 245(+5/-5)	4.5	5GHM0000004089
	GHM 6x2 GALV INCL TSL 15x6	2	120 x 180	383 x 350 x 60	278(+5/-5) x 245(+5/-5)	7.7	5GHM0000006300
	GHM 6x3 GALV INCL TSL 15x6	3	120 x 180	513.5 x 350 x 60	408.5(+5/-5) x 245(+5/-5)	10.5	5GHM0000004091
	GHM 6x1 PRIMED INCL TSL 15x6	1	120 x 180	252.5 x 350 x 60	147.5(+5/-5) x 245(+5/-5)	4.9	GHM60000000112
	GHM 6x2 PRIMED INCL TSL 15x6	2	120 x 180	383 x 350 x 60	278(+5/-5) x 245(+5/-5)	7.4	GHM60000000212
	GHM 6x3 PRIMED INCL TSL 15x6	3	120 x 180	513.5 x 350 x 60	408.5(+5/-5) x 245(+5/-5)	9.9	GHM60000000312
	GHM 6x1 AISI316 INCL TSL 15x6	1	120 x 180	252.5 x 350 x 60	147.5(+5/-5) x 245(+5/-5)	4.9	5GHM0000004746
	GHM 6x2 AISI316 INCL TSL 15x6	2	120 x 180	383 x 350 x 60	278(-2) x 245	7.4	5GHM0000004027
	GHM 6x3 AISI 316 INCL TSL 15x6	3	120 x 180	513.5 x 350 x 60	408.5(+5/-5) x 245(+5/-5)	9.9	5GHM0000004044



Sealing components

Sealing components



Lubricant



RM module with
Multidiameter™



Wedge & Wedgekit



RM solid compensation
module



Stayplate



Holder tools



Sealing kit

Accessories

For detailed information, please visit [roxtec.com](https://www.roxtec.com).

The product information provided by Roxtec does not release the purchaser of the Roxtec system, or part thereof, from the obligation to independently determine the suitability of the products for the intended process, installation and/or use.

Roxtec gives no guarantee for the Roxtec system or any part thereof and assumes no liability for any loss or damage whatsoever, whether direct, indirect, consequential, loss of profit or otherwise, occurred or caused by the Roxtec systems or installations containing components not manufactured by an authorized manufacturer and/or occurred or caused by the use of the Roxtec system in a manner or for an application other than for which the Roxtec system was designed or intended.

Roxtec expressly excludes any implied warranties of merchantability and fitness for a particular purpose and all other express or implied representations and warranties provided by statute or common law. User determines suitability of the Roxtec system for intended use and assumes all risk and liability in connection therewith. In no event shall Roxtec be liable for indirect, consequential, punitive, special, exemplary or incidental damages or losses.

The Roxtec products are offered and sold in accordance with the conditions of the Roxtec General Terms of Sales. The latest version of the Roxtec General Terms of Sales can be downloaded from <https://www.roxtec.com/en/about-us/about-roxtec/general-terms-of-sales/>

We reserve the right to make changes to the product and technical information without further notice. Any errors in print or entry are no claims for indemnity. The content of this publication is the property of Roxtec International AB and is protected by copyright.

This document was generated on: 2024-04-29